

TREKKER HINGE OPERATION MANUAL

Note: The end of the lever is spring loaded so you can pull it out and rotate it to any position.

1. OPENING THE HINGE



STEP 1 :

Hold the handle lever and rotate it clockwise , the circled pin will come off from the hinge .

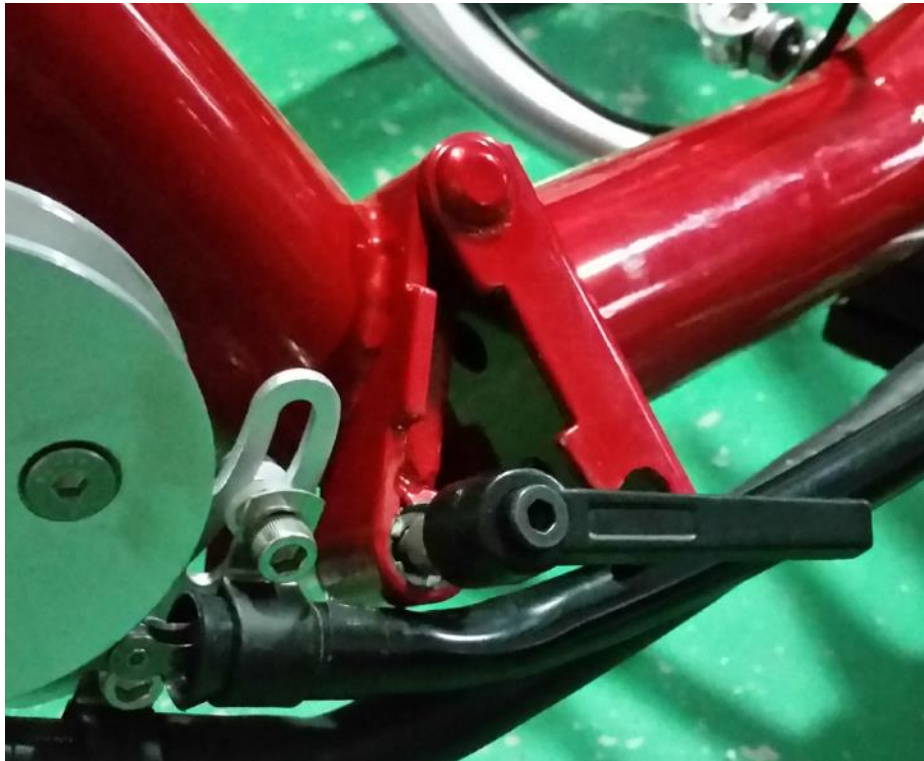


Step 2 : Pull handle lever out , you will hear it click.

Step 3 : Fold the frame

2. CLOSING THE HINGE

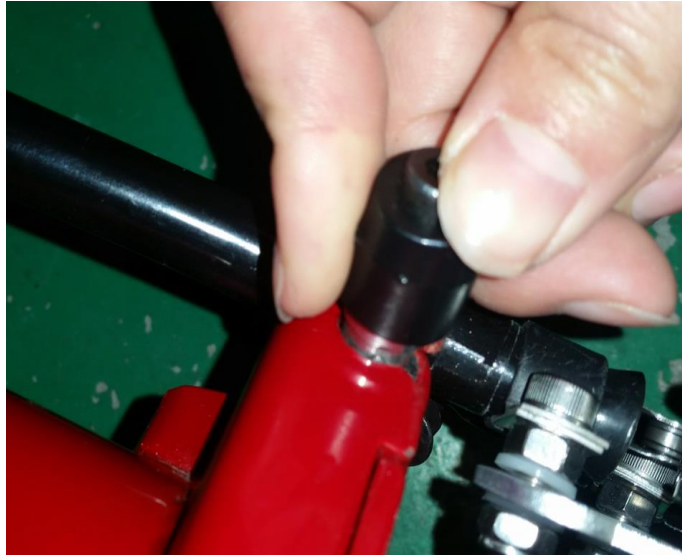
Step 1 : Fold the frame back



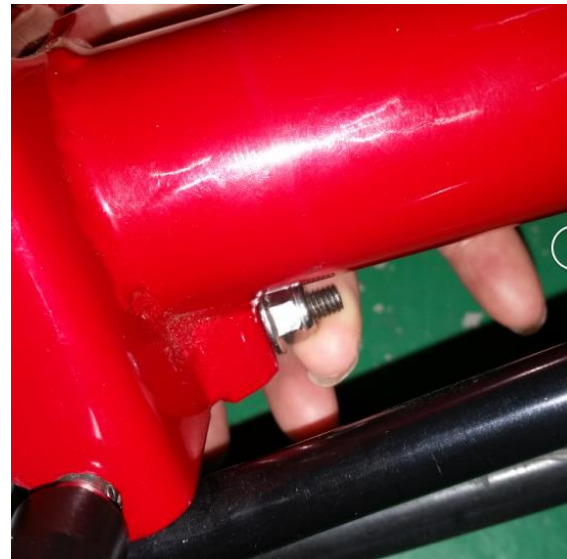
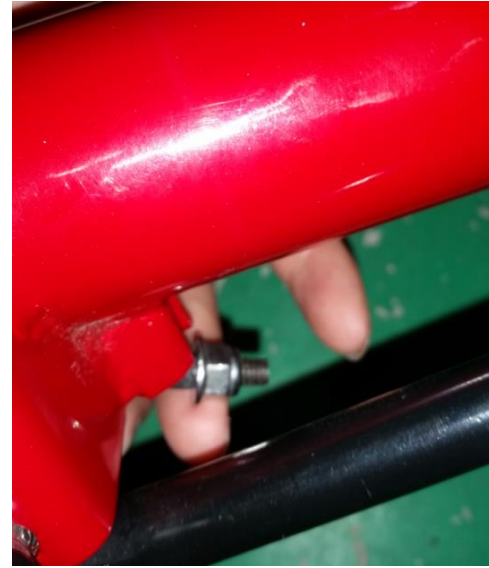
Step 2 : Pull the hinge pin back



Step 3 : Push the hinge pin back in



Step 4: Rotate the nut back onto the hinge



Step 5: Rotate the lever counter-clockwise until it is tight enough